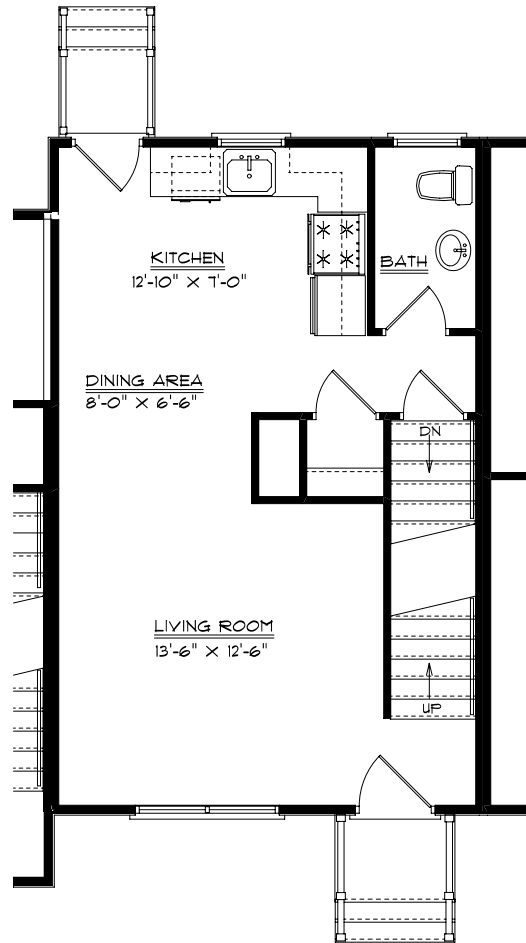


FOUNDATION PLAN C UNIT



FIRST FLOOR PLAN C UNIT

PROPOSED FLOOR PLAN FOR:
THE VILLAGES at
MERRIMAC LANDING

TYNGSBORO, MA.

GAYIN AND SULLIVAN ARCHITECTS, INC.
 128 WARREN STREET LOWELL, MA.